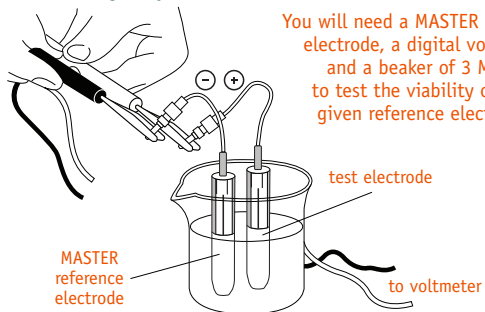


## > TESTING THE VIABILITY OF Ag/AgCl REFERENCE ELECTRODES

If you are concerned about the viability of a particular Ag/AgCl reference electrode, it can be tested using a voltmeter, a MASTER reference electrode (RE that is solely stored and used for this purpose), and a solution of 3 M KCl (see below). Read the potential difference between the MASTER reference electrode and electrode under question using the voltmeter. If 2 RE's are of the same type (e.g. Ag/AgCl vs Ag/AgCl), then the voltmeter should read 0 +/- 20 mV. If a reading is significantly different, then another electrode of the same type should be used to help distinguish which of the two needs replaced. Make sure to also regenerate and/or calibrate your MASTER RE regularly.



You will need a MASTER reference electrode, a digital voltmeter and a beaker of 3 M KCl to test the viability of any given reference electrode.

## > REGENERATING THE Ag/AgCl REFERENCE ELECTRODES

If the frit or filling solution becomes contaminated and potential drift is observed, then the CoralPor® frit can be removed and replaced with (MF-2064) and the glass body refilled with a new 3 M KCl solution.



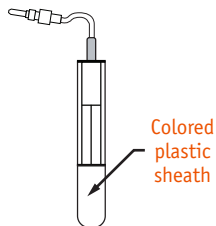
## > Ag/AgCl REFERENCE ELECTRODE MF-2056



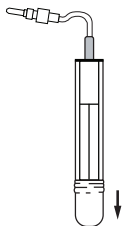
2701 Kent Ave., West Lafayette, IN, 47906, USA  
[www.basinc.com](http://www.basinc.com) | 1-800-845-4246 | [basi@basinc.com](mailto:basi@basinc.com)

## > REMOVING THE SHEATH

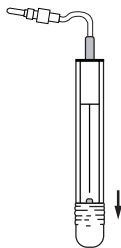
Every Ag/AgCl reference electrode is shipped with a yellow plastic sheath that covers the porous CoralPor® frit and slows drying. **Immediately remove the sheath upon receipt.** Roll the sheath off the electrode without pulling the sheath and without holding the electrode by the pin. A small cut at the upper edge of the sheath will help initiate rolling the sheath off the electrode.



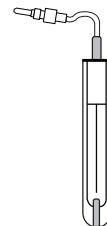
Reference electrode as shipped.



Starting at top of sheath, pull gently and start to roll the edge down.



Continue rolling sheath.



Reference electrode is now ready for immediate use. Store in 3 M KCl.

## > DISLODGING BUBBLES

Bubbles lodged in the tip may prevent electrical contact with the electrolyte and may damage the working electrode. Bubbles can be dislodged by holding the top of the electrode with one hand and tapping the electrode near the CoralPor® tip until the bubbles rise to the top.

## > STORING Ag/AgCl REFERENCE ELECTRODES

**After the sheath is removed, store the electrode tip in 3 M KCl.** The Ag/AgCl reference electrodes are easily ruined by drying. Prevent the tips from drying out by placing in a storage vial (MR-5275) containing 3 M KCl when not in use. Only the tip needs to be immersed in the storage solution; the connecting pin needs to be kept dry to minimize corrosion. Reference electrodes will naturally change with use due to the ion and solvent transport across the porous CoralPor® frit. The rate of change is a function of the difference in composition between the sample solution and the filling solution (3 M KCl). Storing the reference electrode in 3 M KCl between experiments will extend its lifetime, but **reference electrodes are expendable items, so be certain to have spares available.**