

---

# Epsilon EClipse™

Potentiostat / Galvanostat / Bipotentiostat

## Quick Start Guide



August 2022





**2701 KENT AVENUE  
WEST LAFAYETTE, INDIANA 47906 USA  
WWW.BASINC.COM**

Thank you for purchasing the Epsilon EClipse™. Your new BASi instrument will provide years of service for your electrochemical requirements. The Epsilon EClipse™ was fully tested electronically and with a chemical test before shipping. The chemical test procedure (shown in the manual) and results are included in the folder. Please follow the procedure below when setting up your instrument.

A full electronic manual is available at [www.basinc.com/manuals](http://www.basinc.com/manuals).

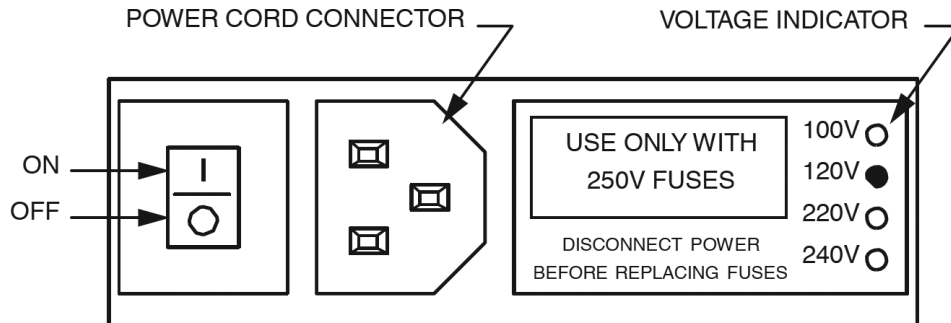
Copyright BASi 1997 – 2022  
Bioanalytical Systems, Inc.  
[www.basinc.com](http://www.basinc.com)

This instrument, either wholly or in part, is manufactured for research purposes only. Use for medical diagnosis is not intended, implied, or recommended by the manufacturer. Use for this purpose and accountability for same rest entirely with the user.

## POWER

The Epsilon EClipse™ system requires a grounded power supply, providing either 120 or 240 V at 50/60 Hz. Before connecting the power cord, check that the indicator next to the power connection shows the correct voltage (Figure 1).

**FIGURE 1 POWER CONNECTION**



If the indicator does not show the correct voltage, **DO NOT TURN POWER ON**. See the manual for full instructions to change setting.

## SOFTWARE INSTALLATION

If you bought the Epsilon EClipse™ with a computer from BASi, the software is already installed on the computer. Simply unpack and set up the computer.

If you are going to use a computer not supplied BASi, then you will have to install the Epsilon software version 2.13.77 on your computer. The Epsilon software is included on a USB stick with each purchase, and you can simply follow the instructions. Please note that we strongly recommend installing and using Epsilon software version 2.13.77 as a default. The Epsilon Eclipse software version 3.0.84 (also provided with Epsilon Eclipse) is to be installed and used only for the advanced applications where applied voltage requirement is on or around  $\pm 10V$ . The Epsilon EClipse™ system requires a computer running Windows 7 or later. Connect a standard USB cable between any USB port on the computer and the USB port on the back of the Epsilon EClipse™. For any technical support, please do not hesitate to email [ec@basinc.com](mailto:ec@basinc.com).

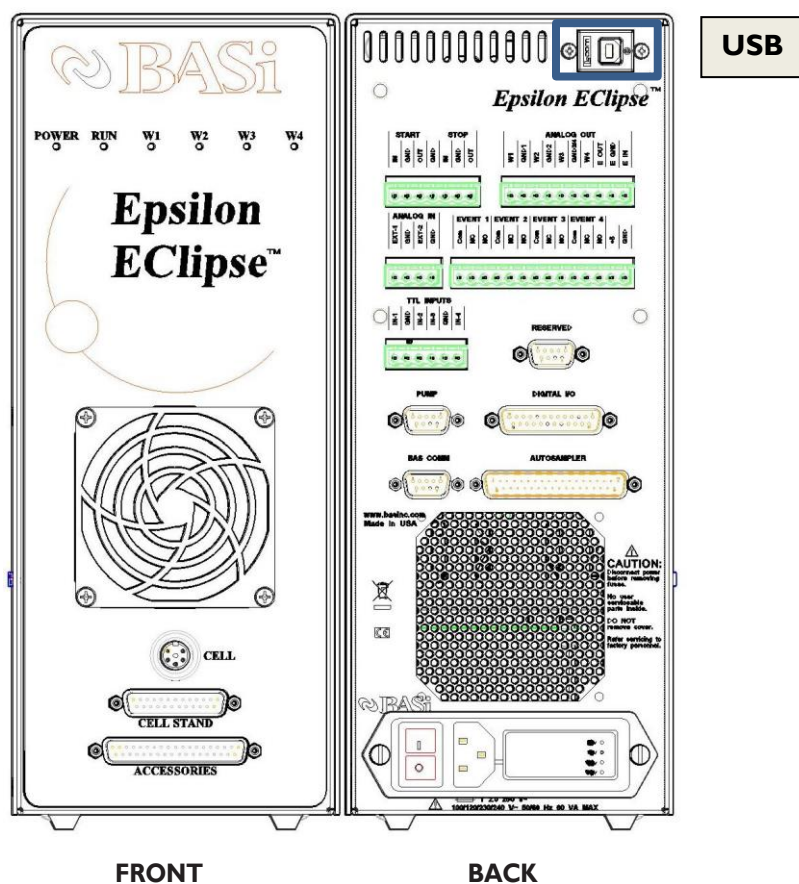
Follow the instructions as they appear on the monitor.

The minimum PC requirements are  
 Windows 7 or newer  
 USB port

## COMPUTER CONNECTION

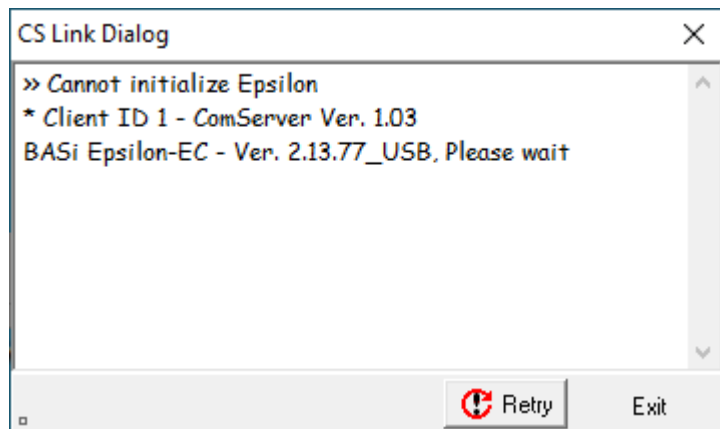
Connect a standard USB cable (included) between any USB port on the computer and the USB port on the Epsilon EClipse™ (Figure 2).

FIGURE 2 CONNECTION PORTS



## STARTING THE EPSILON ECLIPSE™

The most important part of starting the Epsilon EClipse™ is establishing the link between the instrument and the PC. The Epsilon EClipse™ should be switched on first, and then Epsilon software version 2.13.77 should be opened on the PC. The link between the PC and the instrument will automatically be established. The status of the link will be displayed in the bottom left corner of the software, which will display “Epsilon Connected” once connection has been established. If the instrument and PC fail to connect, the message shown in Figure 3 will appear on the PC screen. If the link is broken after it has been established, the PC and Epsilon EClipse™ can be reconnected using Reconnect Epsilon in the Instrument menu.

**FIGURE 3. FAILED EPSILON ECLIPSE™ – PC CONNECTION MESSAGE.**

## CELL CONNECTION

The cell lead cable is the group of wires that connects the Epsilon EClipse™ to the electrodes of the electrochemical cell. If the Epsilon EClipse™ will be used with a BASi cell stand (e.g., C3, CGME, or RDE), please see the specific cell stand manuals for connection and operation of these accessories.

A general-purpose cell lead cable is supplied with the Epsilon EClipse™. The general-purpose cable plugs into the cell port on the front panel and terminates with alligator clips that attach directly to the electrodes.

There are 4 electrode leads and 1 grounded (shielding) lead.

The color code is:

Black covered wires: Working electrode leads (W1 and W2)

Red covered wire: Auxiliary electrode lead

White covered wire: Reference electrode lead

Bare or black wire w/lug: Earth ground connector



**WARNING: NEVER CONNECT OR ADJUST THE CELL LEADS DURING AN EXPERIMENT OR WHEN CELL=ON. DOING SO COULD DAMAGE THE SENSITIVE AMPLIFIERS AND VOID YOUR WARRANTY.**

